

WELLINGTON WORKS

01 - WELCOME



Thank you for visiting this drop-in. We would be delighted to talk with you in more detail about our forthcoming proposals for **24 new high quality homes** on the western side of Wellington Works.

The application will be submitted by Criterion Capital, and with the help of multiple consultants the homes have been sensitively designed by Architectural practice **T2S Architecture Ltd.**

Please don't hesitate to talk to team members and ask any questions.

We look forward to talking with you.

ARCHITECT
T2S Architecture Ltd

**T2S
ARCHITECTURE
LTD**

PLANNING CONSULTANT
Rapley's

RAPLEYS

TRANSPORT CONSULTANT
Velocity Transport Planning

VELOCITY
Transport Planning

LANDSCAPE ARCHITECT
Camlins

Camlins

CGI
Conica Studio

CONICA

PUBLIC CONSULTATION
Your Shout

communityUK

**YOUR
SHOUT**

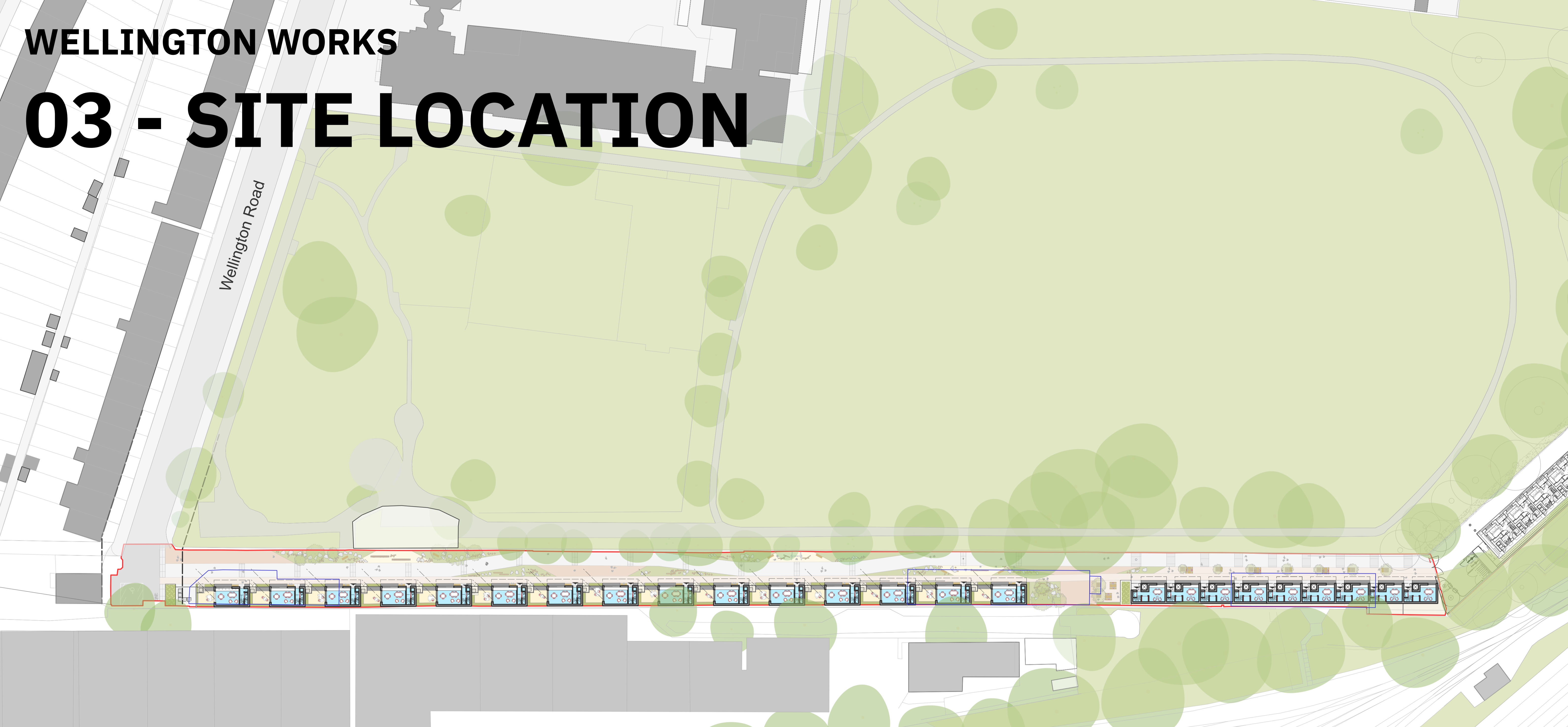


WELLINGTON WORKS

02 - SITE LOCATION



03 - SITE LOCATION



The forthcoming application for this site proposes the delivery of **24 high quality residential town-house and terraced dwellings**, comprising twenty 2-bedroom houses and four 3-bedroom houses.

The buildings are arranged in two terraces and the majority of the homes will be **three storeys** in height, with four detached properties rising to **four storeys**.

This creates a more **varied and visually interesting roof-scape** along the street, enhancing the architectural character of the development while remaining in keeping with its surroundings.

All homes are designed to be dual aspect - some are triple aspect - allowing for **excellent natural daylight, good outlook**, and the opportunity to make the most of views towards the adjacent park.

The proposals will **deliver homes** that respond positively to the character of the area and make a meaningful contribution to Wimbledon's local economy and nearby amenities.

This **high quality Architectural design** will be an excellent addition to Wimbledon's built environment.

WELLINGTON WORKS

04 - DESIGN



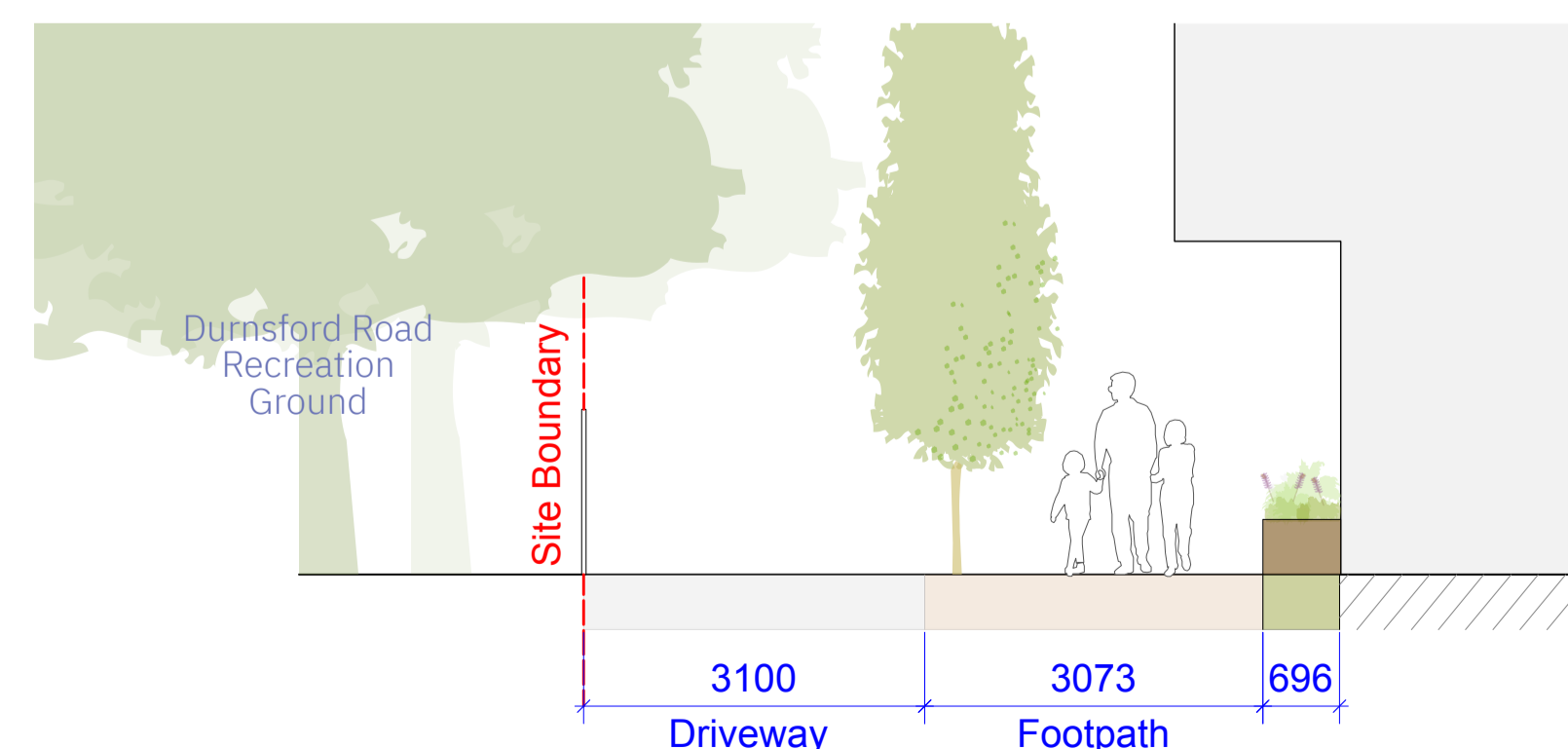
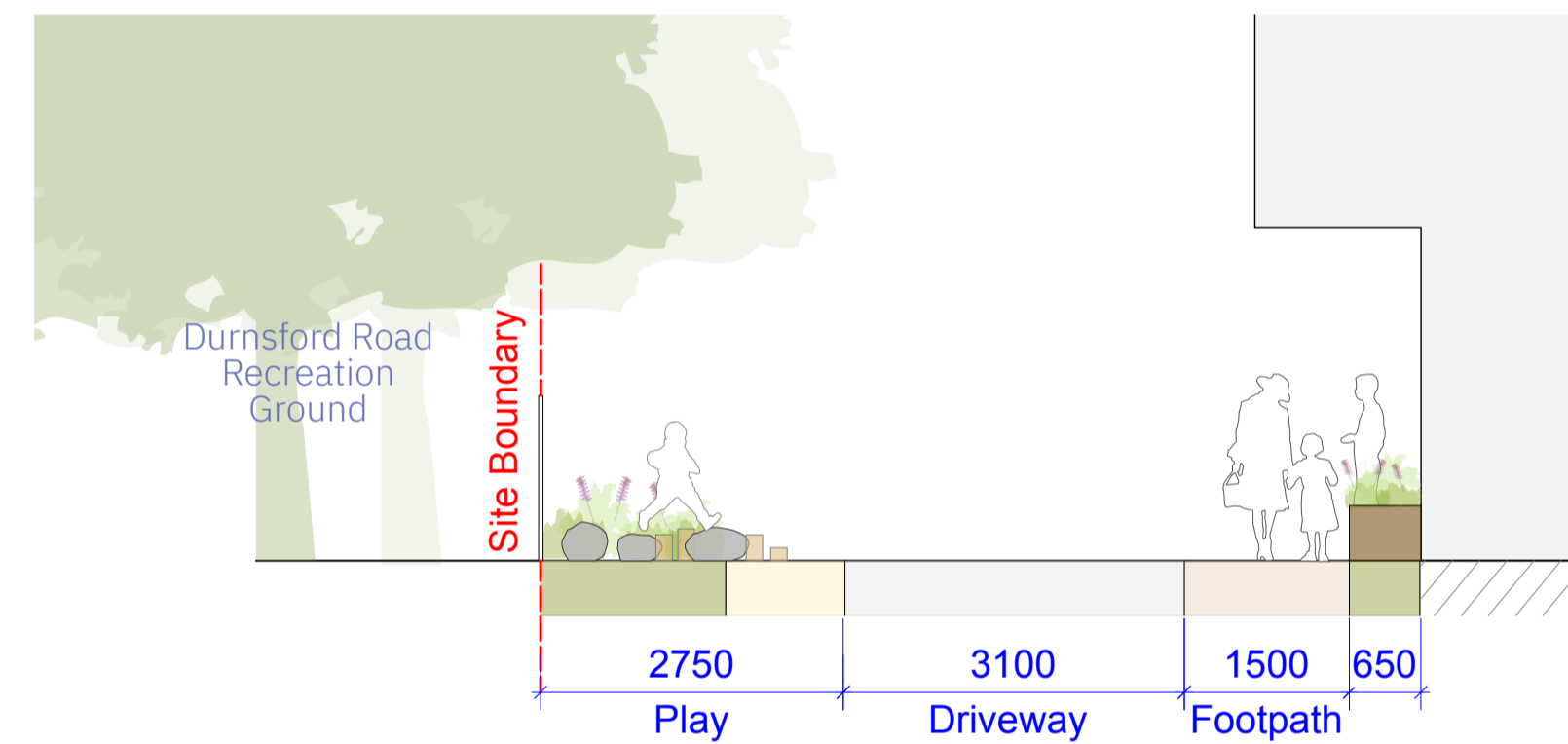
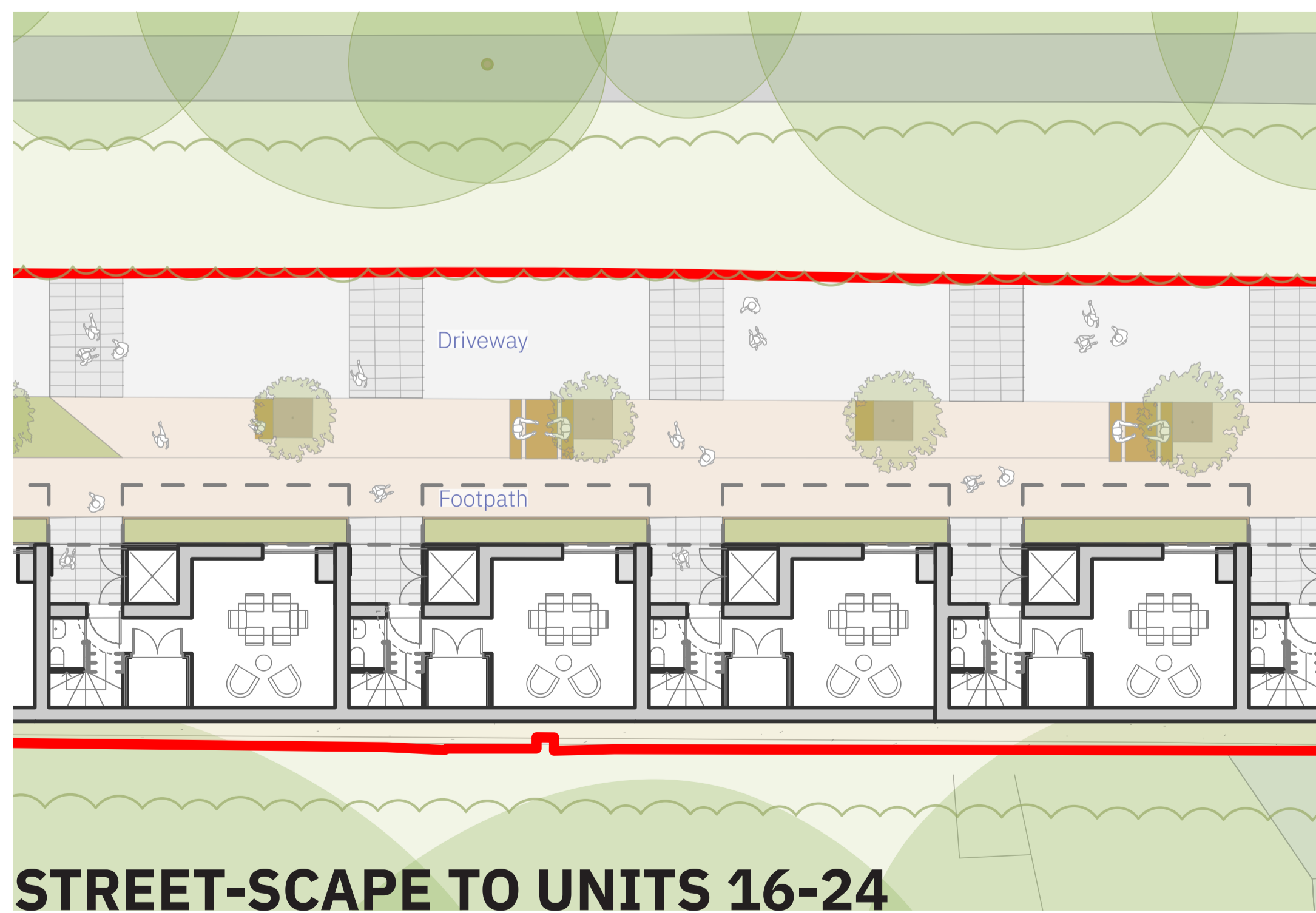
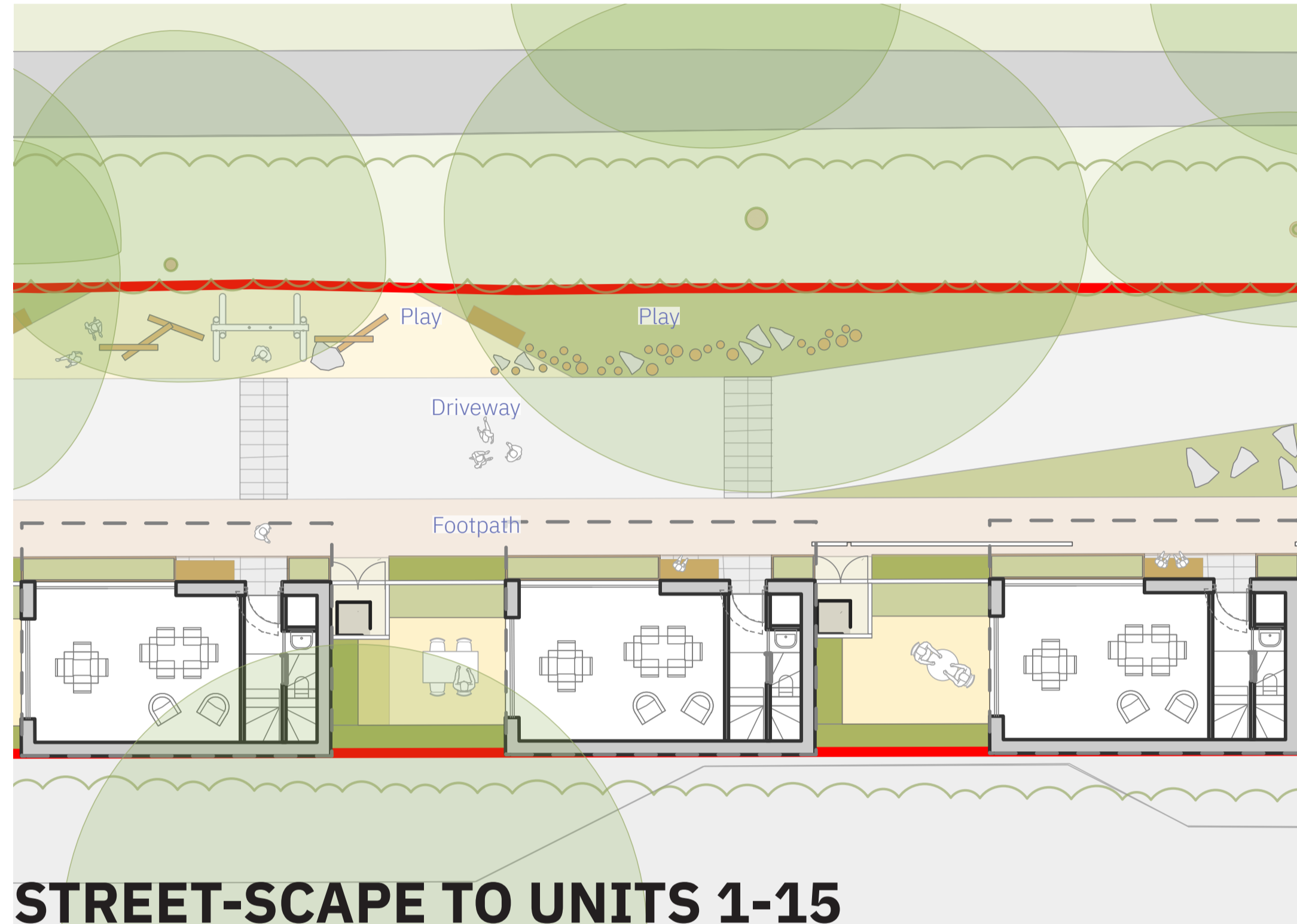
WELLINGTON WORKS

05 - LANDSCAPE

The landscape design will incorporate **play-space, planting**, and clear, legible routes for **pedestrians, cyclists and delivery vehicles in a shared street layout**.

Includes provision of both **private doorstep play and incidental play-space** in the street. Elements include natural play including boulders and logs. **Secure doorstep play** is provided adjacent each unit at ground floor for units 1-15, and at roof level for units 16-24.

A biodiversity enhancing planting strategy will incorporate **shrubs and herbaceous perennials**, whilst optimizing views along the streetscape and into the park.



WELLINGTON WORKS

06 - PARK VIEW



07 - THANK YOU

Thank you for viewing our proposals for Wellington Works.

We value your views and welcome your feedback.

Please share your comments by **completing one of the feedback forms** provided and returning it before you leave.

Your feedback will help inform the final planning application.

What Happens Next?

- **Public consultation:**
Feedback collected and reviewed
- **Planning application submitted:**
Later this year.
- **Planning decision:**
Subject to London Borough of Merton's determination process.
- **Construction** (if approved):
Construction details and timings will be shared with the local community in advance, with measures in place to minimise disruption.

We will continue to keep residents informed as the project progresses.

If you have any questions or would like further information, please get in touch:

Email:
feedback@yourshout.com.

Phone: 0800 955 1042 (lines open during office hours)

Website: WellingtonWorks.site

